

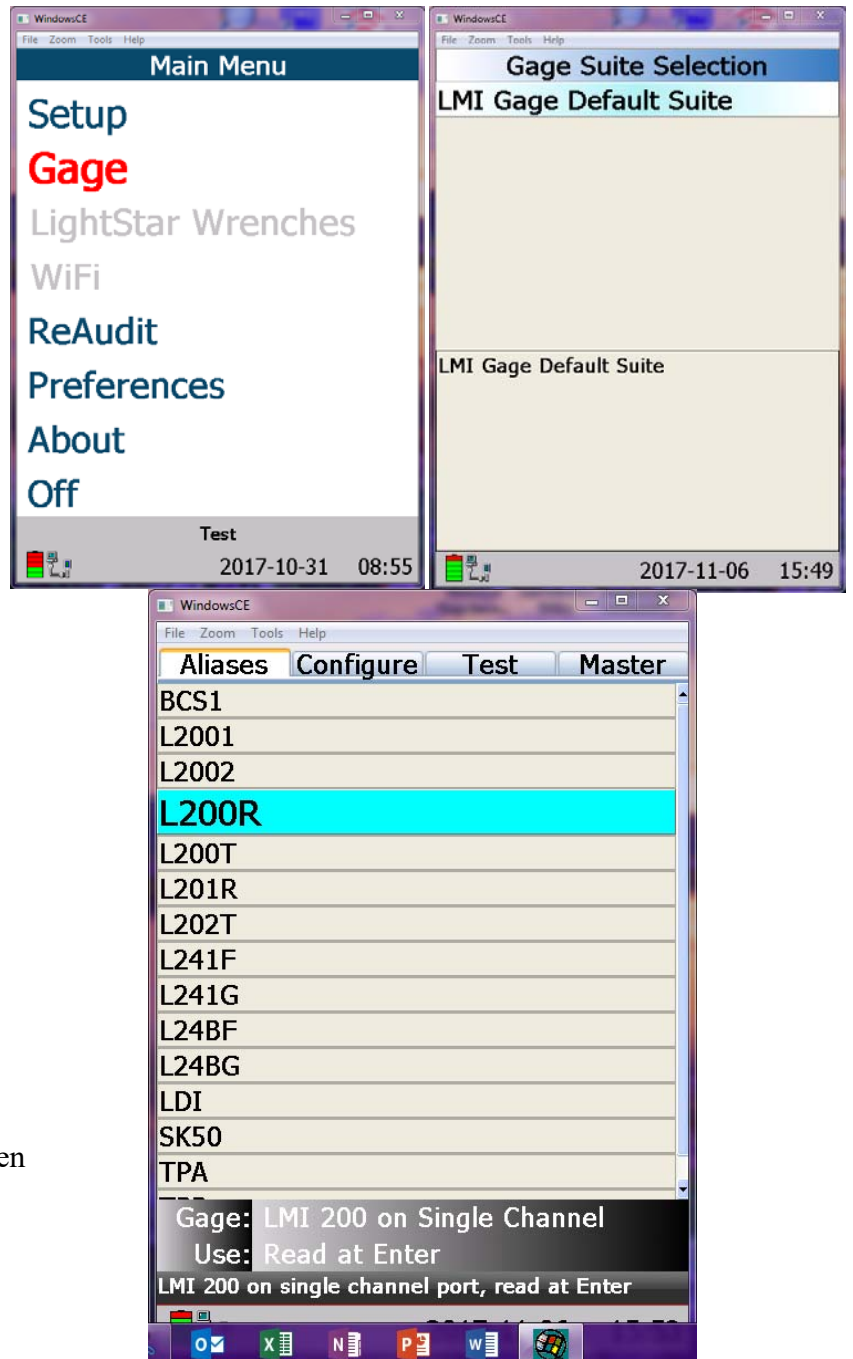


Quick Start Guide to LMI 200 Probe Calibration with DM600

- Press On/Menu on the DM600
- Press ↓ to highlight *Gage*
- Press 
- Select LMI Gage Default Suite
- Press 
- Use the arrows to select L200R
- Press → to select the *Master* tab
- Follow the directions on the screen



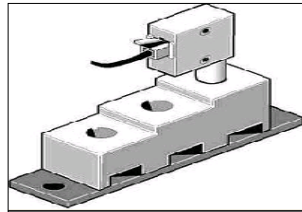
Calibrating 200

Follow the onscreen 3 Point Mastering process instructions for the 200 Probe:

- **LO Position**
- **HI Position**
- **Master Position**

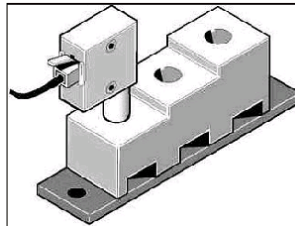
Calibrate the LO Position: Place the Gauge in LO position and press

enter



Calibrate the HI Position: Place the Gauge in the HI position and press

enter



Calibrate the Master Position: Place the Gauge in the Master position and press

enter

