

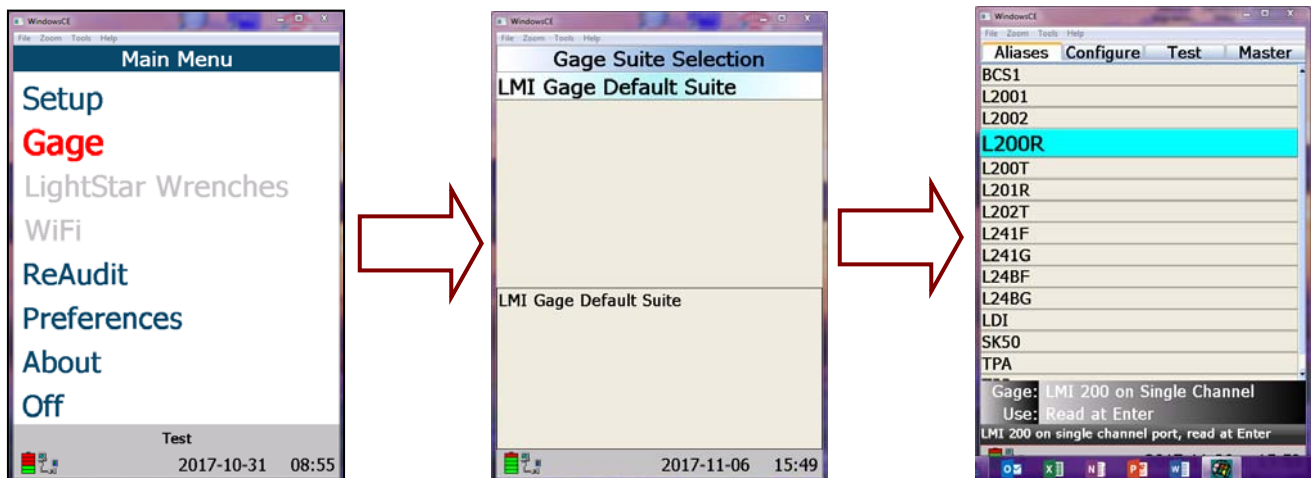


## Quick Start Guide to LMI 241 Association/Calibration with DM600

### Associating 241W

- Press On/Menu on the DM600
- Press ↓ to highlight *Gage*
- Press 
- Select LMI Gauge Default Suite
- Press 
- Use the arrows to select L241F
- Press → three times to open the Master Tab
- Follow the directions on the screen



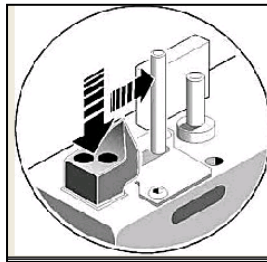
## Calibrating 241W

To Master an LMI Gauge, you will follow a basic 3 Point Mastering process for the 241 gauge:

- **LO Position**
- **HI Position**
- **Master Position**

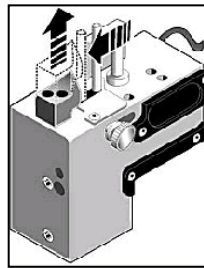
**Calibrate the LO Position:** Place the Gauge in LO position and press

enter



**Calibrate the HI Position:** Place the Gauge in the HI position and press

enter



**Calibrate the Master Position:** Place the Gauge in the Master position of the block and press

enter

