

101 N. Alloy Dr.
Fenton, MI 48430

LMI™

Ph (810) 714-5811
Fax (810) 714-5711

CustomerService@lmicorporation.com

LINEAR **M**EASUREMENT **I**NSTRUMENTS, Corp.

Research, Development and Manufacturing of Precision Measuring Systems

“THE PROBE”



INSTRUCTION MANUAL FOR THE LMI 200 TRANSDUCER

LMI Corporation

The LMI 200 probe is designed and manufactured to be used as a compact, durable precision electronic linear measurement instrument that delivers positive and negative deviation measurements from a set nominal reference point. The LMI 200 probe is compatible with many data collection systems on the market today and is used for gaging glass, plastic and metal parts on a checking fixture.

LMI MODEL 200 SERIES:

LMI 200-S: Standard unit with fixed pointed tip and 10mm travel

LMI 200-SB: Same as LMI 200-S except unit comes with interchangeable pointed tip and flat tip.

LMI 200-SC: Unit comes with interchangeable pointed tip, flat tip and two reference positions for a broad range of checking possibilities. The two reference positions are possible due to the barrel of the probe transducer being stepped and having two different barrel diameters. (Fig.1). Please refer to the LMI 200 Probe Catalog brochure for detailed dimensions and information.

LMI 200-SF: Unit comes with interchangeable pointed and flat tip and 22 mm travel

MAKING THE CHECK:

Using the pre-calibrated and mastered LMI 200 Probe, insert the LMI probe into any standard 3/8" ID bushing installed on the checking fixture. Verify that the shoulder on the barrel of the LMI probe is firmly pressed against the face of the bushing. The LMI probe is now ready for the reading to be taken (See Fig. 2). Once the LMI probe reading has been recorded, remove the LMI probe from the bushing and continue to the next check point on the fixture.

LMI MODEL 200 PROBE CALIBRATION AND MASTERING:

Calibration is accomplished by inserting the probe into the low and high step of the LMI 210 master block.

Mastering for the 31mm nominal position is done by inserting the probe into the middle step of the LMI 210.

Due to the large variety of data collection systems on the market, please contact LMI for specific calibration and mastering instructions.

LMI MODEL 200 PROBE OPTIONS AND ACCESSORIES:

Please refer to the LMI 200 probe catalog brochure for information regarding options, accessories and more detailed information for the LMI 200 series probe transducers.

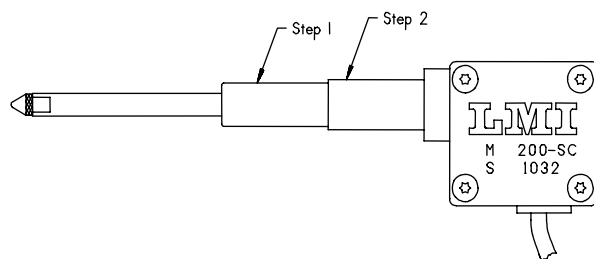


FIGURE 1

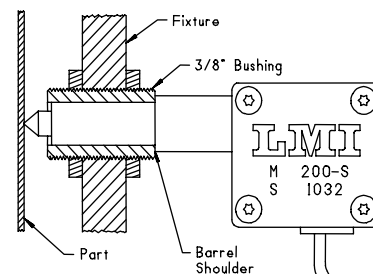


FIGURE 2