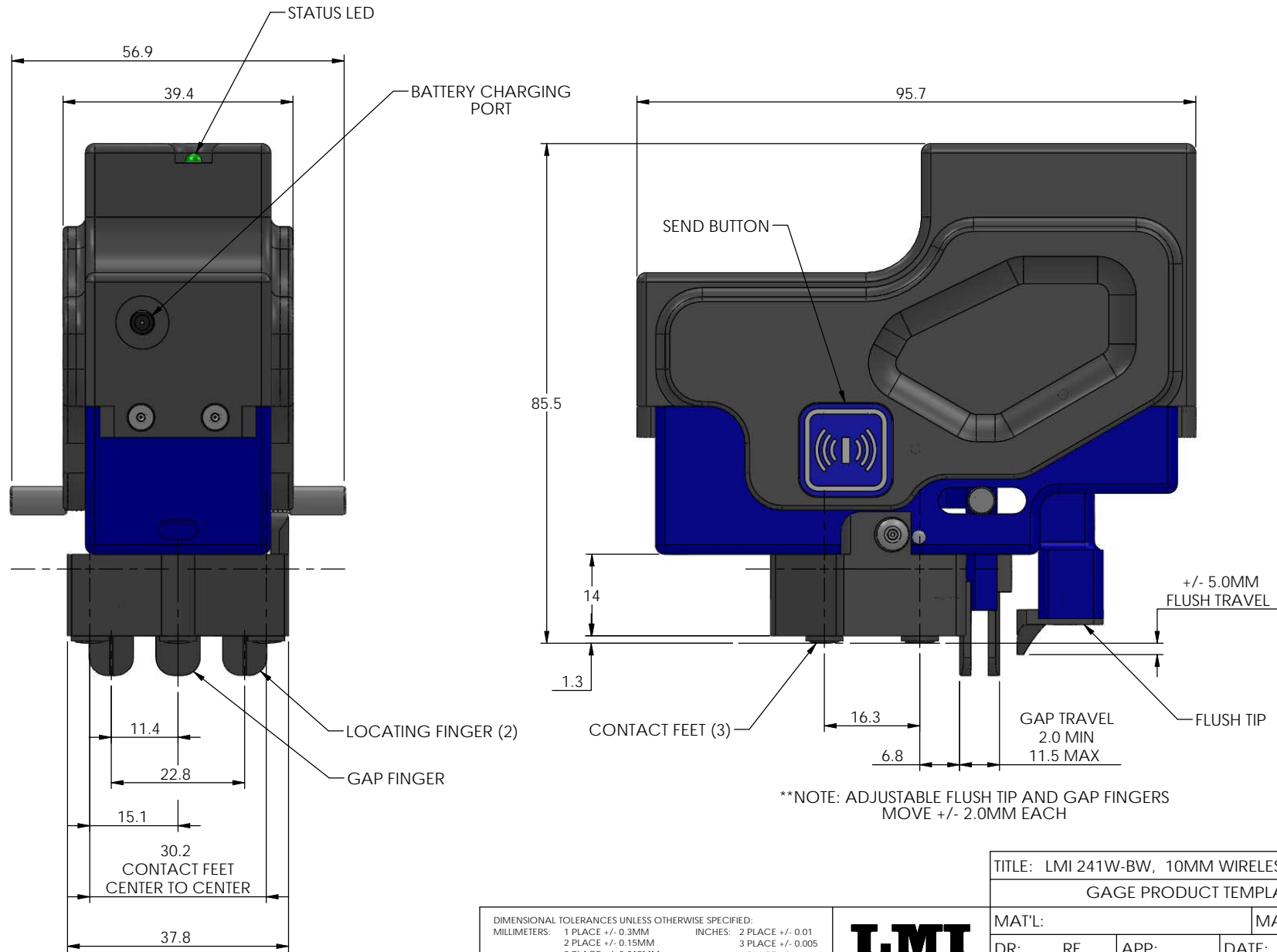


This drawing contains designs and other information which are property of LMI Corporation. This drawing may not, in whole or in part, be duplicated or disclosed or used for manufacture of the part disclosed herein, without the prior written permission of LMI Corporation. Contact LMI to verify current specifications.



**NOTE: ADJUSTABLE FLUSH TIP AND GAP FINGERS MOVE +/- 2.0MM EACH

DIMENSIONAL TOLERANCES UNLESS OTHERWISE SPECIFIED:
 MILLIMETERS: 1 PLACE +/- 0.3MM 2 PLACE +/- 0.15MM 3 PLACE +/- 0.015MM 4 PLACE +/- 0.005MM
 INCHES: 2 PLACE +/- 0.01 3 PLACE +/- 0.005 4 PLACE +/- 0.0005
 ANGLE +/- 15 MINUTES (25 DEGREES)
 CLEAN & EVEN BREAK ALL EDGES .015 UNLESS OTHERWISE SPECIFIED

LMI
 PHONE #(810) 714-5811

TITLE: LMI 241W-BW, 10MM WIRELESS FLUSH/GAP			
GAGE PRODUCT TEMPLATE			
MAT'L:		MAT'L P/N: N/A	
DR:	RE:	APP:	DATE: 11/29/11
SHEET: 1 OF 1		SCALE: 1:1	PART NO: 241W-BW