

## LINEAR MEASUREMENT INSTRUMENTS, Corp.

Research, Development and Manufacturing of Precision Measuring Systems

### DIMENSIONAL CHECKING WITH THE LMI MODEL 770-G FLUSH & CHECK TRANSDUCER

The LMI Model 770-G Flush & Gap transducer is designed to be used as a fixed location precision electronic measuring instrument that can be used for gaging plastic, metal or glass components within a check fixture. The LMI 770-G series transducers take their flush and gap checks at 90 degrees to each other.

#### THE FLUSH CHECK

- The LMI 770-G transducer is designed to take a flush reading parallel to the top of the fixture rail by inserting the locating pin into the guide hole in the LMI 776 block mounted on the fixture rail. (See Figure 1)
- Once the transducer is correctly positioned, allow the flush check tip to make contact with surface to be checked.
- The transducer is now ready for the reading to be taken.

FIGURE 1

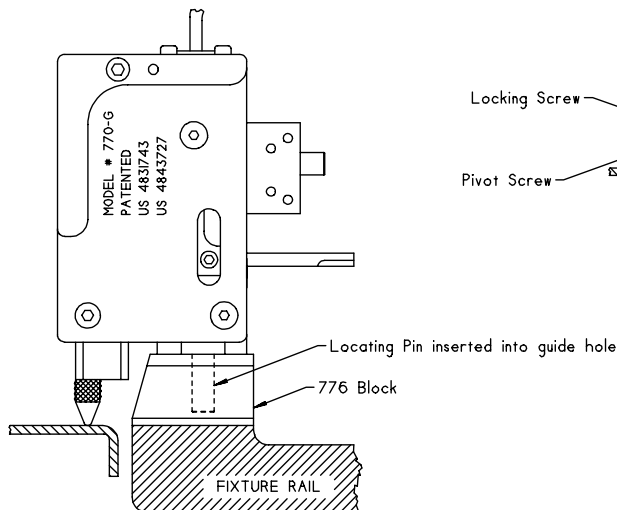
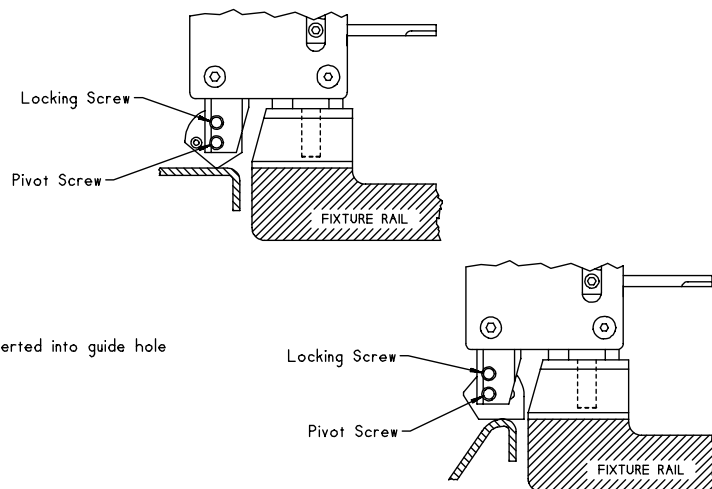


FIGURE 2



**NOTE:** The LMI 770-GF comes equipped with a “flip tip” which permits the flush check tip to be changed from a point to a flat which allows the high point of a contour or radius to be checked. (Figure 2)