

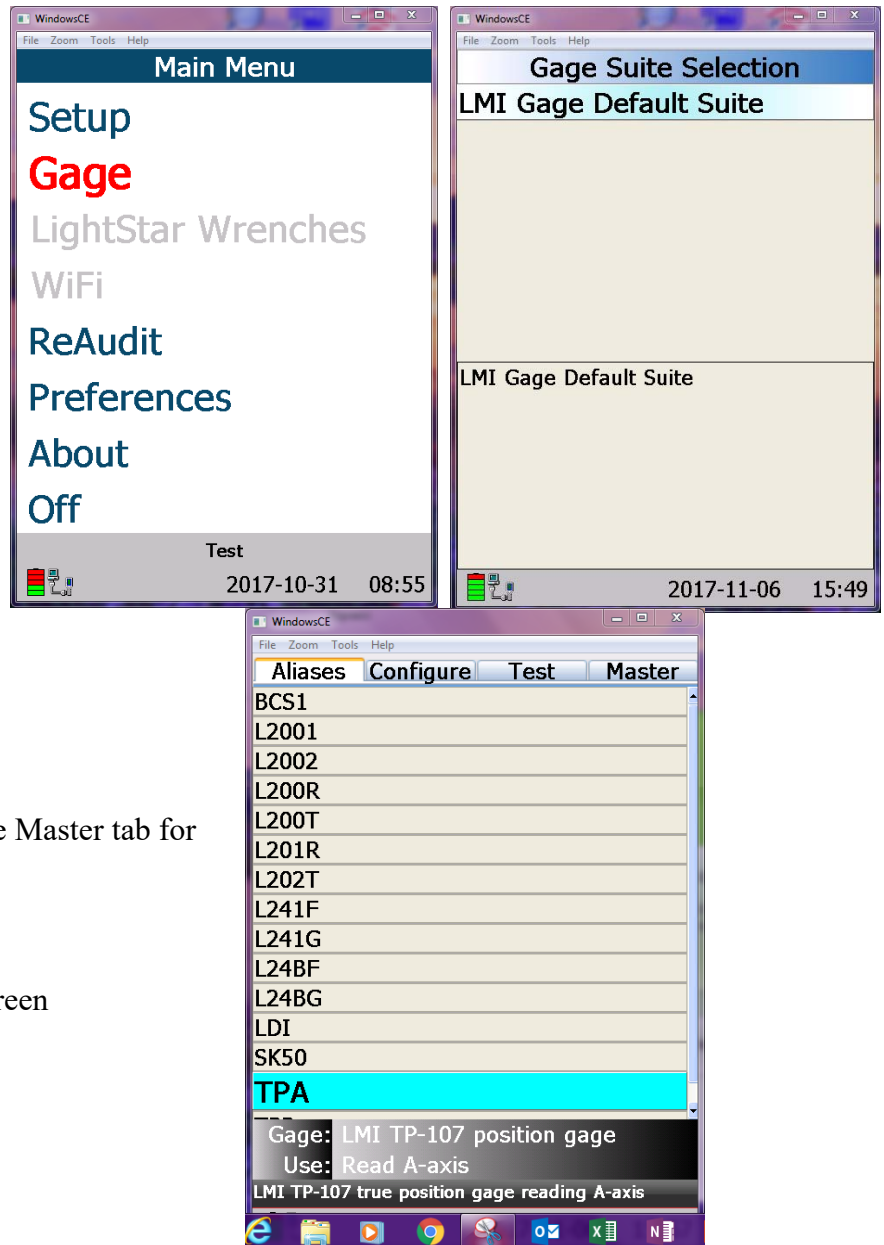


Quick Start Guide to LMI True Position Gage Calibration with DM600

- Press On/Menu on the DM600
- Press ↓ to highlight *Gage*
- Press 
- Select the **LMI Gage Default Suite**
- Press 
- Use the arrows to select TPA
- Use the arrow keys to select the Master tab for TPA
- Follow the directions on the screen



Calibrating Wireless True Position 107

Follow the onscreen 3 Point Mastering process instructions for the TP series probes:

- **LO Position**
- **HI Position**
- **Master Position**

A-Axis Master LO Position:

- Place the TP into the OSM 1.25 Master Block and align the orientation block to the “Low” position for the Master A-Axis.

- Press 



A-Axis Master High Position:

- Move the orientation block to the Master High Position.


- Press 

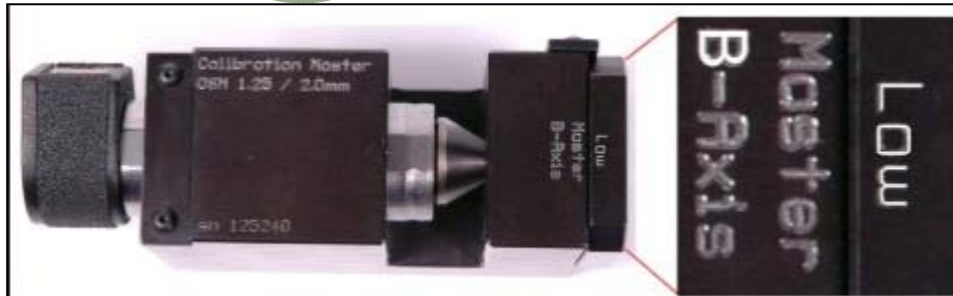


Research, Development and Manufacturing of Precision Measuring Systems

B-Axis Master LO Position:


- Move the orientation block to the “Low” position for the Master B-Axis.

- o Press 



B-Axis Master High Position:


- Move the orientation block to the Master High Position.

- o Press 



Zero Master of A-Axis & B-Axis:

- Place the LMI TP probe into the Zero Master Bushing

- o Press 



TruPosition with zero bushing